

WCRP ACADEMY

STRUCTURE AND GOVERNANCE

The Academy Lighthouse Activity (LHA) consists of a Steering Group, three Working Groups, an Advisory Board and Ex-officio members. The Academy is supported by the WCRP Secretariat with a liaison to assist in the coordination of the activities of the Academy, and any assigned LHA Support Units, should this be realized.

Steering Group (SG)

The SG is responsible for implanting the Academy's science plan, its overall direction and services, as well as resource allocation. The SG is composed of the co-chairs and appointed members, including the leads of each of the three WGs. The SG reports to the WCRP Joint Scientific Committee (JSC). In 2022 the SG will meet as often as required.

Working Groups (WGs)

These are: Stocktake, Identity and Funding WGs. They are the main drivers of activities of the Academy. In the future there might be changes to the initial WGs and/or additional WGs will be formed.

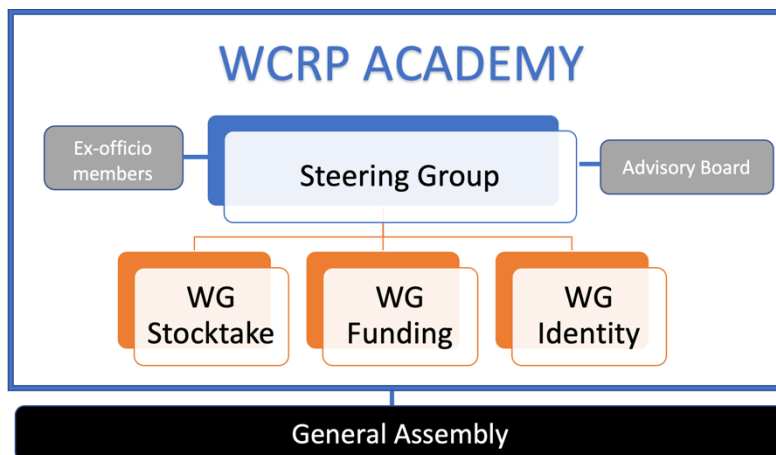
Advisory Board (AB)

The AB will include representatives from stakeholders (e.g., providers and users of the Academy services such as trainers and trainees, funding agencies, Early Career Researchers). Their task is to provide input and feedback and future direction(s) of the Academy. The AB will meet once a year.

Ex-officio members (ExO):

General Assembly (GA)

This will be a gathering of the entire Academy community, i.e., SG, WGs, AB and ExO, with the goal to discuss the performance of the Academy, propose changes/adjustments based on lessons learned and plan new activities. The meeting frequency will be determined.



MEMBERSHIP

Recruitment will be performed as follows:

- Steering Group: Open calls will be launched. Appointment will follow the [Guidelines for Membership of WCRP Bodies](#). It is the WCRP JSC that approves new members.
- Working Groups: Open calls will be launched. Appointment will follow the [Guidelines for Membership of WCRP Bodies](#). It is the SG that approves new WG members. WCRP Core Projects and partner organizations outside WCRP will be encouraged to identify and nominate potential applicants. All WGs should include early career researchers in the membership.
- Advisory Board: Members are appointed by the SG. They will be selected according to their expertise or affiliation. AB members are appointed for a 2-year term that can be renewed indefinitely.
- Ex-officio members: by invitation